



# COMPANY PROFILE

**EMAIL**

subai.eng.solution@gmail.com

**WEBSITE**

www.subaiengineeringsolutionandservices.com

**TELEPHONE**

9337141617

## ABOUT US

**SUBAI ENGINEERING SOLUTION AND SERVICES** specialize in delivering comprehensive turnkey solutions tailored to meet the diverse needs of our clients. Our extensive product range includes high-quality IT equipment such as computers, laptops, printers, televisions, sound systems, CCTV and air conditioners. Additionally, we provide a variety of office essentials, including office stationery, ensuring your workspace is fully equipped. We also offer specialized services in civil work, interior design, and modular and lab furniture, along with customized steel fabrication to suit your specific requirements. Our team is dedicated to creating functional and aesthetically pleasing spaces that enhance your productivity and comfort. In addition, we provide annual maintenance contracts (AMCs) for all types of office equipment and comprehensive cleaning services to ensure your environment remains clean, organized, and operational year-round. Our mission is to deliver innovative, reliable, and efficient solutions that help businesses and organizations thrive.

## OBJECTIVE

**SUBAI Engineering Solution and Services** is your trusted partner in transforming both residential and commercial spaces with precision and style. Located in the heart of Cuttack, our company specializes in a comprehensive range of services, including civil works and interior design tailored to meet your unique needs. Our innovative solutions encompass state-of-the-art modular kitchens and bespoke furniture, ensuring functionality blends seamlessly with aesthetics. Additionally, we offer a curated selection of premium bathroom accessories that add a touch of elegance and practicality to your space. Our commitment to quality craftsmanship and customer satisfaction makes us the ideal choice for those looking to elevate their environments.



# Electronics products

FLASH SALE FRENZY – DON'T MISS OUT!  
OUR PRODUCT:

- Home Appliances
- Laptops & Computers
- Kitchen Appliances
- Air conditioner



GET DISCOUNT 20% ALL PRODUCT

CONTACT US  9337141617

 [www.subaiengineeringsolutionandservices.com](http://www.subaiengineeringsolutionandservices.com)

 **9337141617 /9861075198,**

 **SUBAI.ENG.SOLUTION@GMAIL.COM**

 **WWW.SUBAIENGINEERINGSOLUTIONANDSERVICES.COM**

## OUR PRODUCTS RANGES



**LAPTOPS**



**AIR CONDITIONERS**



**PRINTERS**



**UPS  
SYSTEM**



**TV**



**CCTV**



**AIO**



**REFRIGERATOR**



**WATER COOLER**

## OUR PRODUCTS RANGES



**WATER PURIFIER**



**CELLING FAN**



**WASHING MACHINE**



**XEROX MACHINE**



**CHIMNEY**



**LIGHT SOLUTION**



**STABILIZER**



**INVERTER**



**MICRO OVEN**

# SUBAI ENGINEERING

## AIR CONDITIONER

THE INDOOR AND OUTDOOR UNITS ONLY

**30%**  
OFF



Turbo Model



Low Watt



Good Quality

[subai.eng.solution@gmail.com](mailto:subai.eng.solution@gmail.com)



SUBAI ENGINEERING SOLUTION AND SERVICES

# Exclusive --- Laptop Deals

Upgrade Your Tech Today

# FURNITURE



## SOFA COLLECTION



## Vegan leather collection







**Arm chair**

145 X 80 X 45 CM



**Elegant sofa**

240 X 90 X 45 CM



# HOME PRODUCT

*Wrap Up in Comfort, Unwrap Your Style*



**PILLOW**



**ELEGANT SEAT**



**BOOK SHELF**

Different widths and colors.



**BLANKET**

Different widths and colors.



**TOWEL**

Different widths and colors.



**SINGLE SEATER SOFA**

Different widths and colors.



**BAMBO SOFA**

Different widths and colors.



**L SHAPE SOFA**

Different widths and colors.



**KITCHEN APPLIANCES**

Different widths and colors.



**AIR CONDITIONER**

Different widths and colors.



**HOME APPLIANCES**

Different widths and colors.



**BLINDS**

Different widths and colors.



**PRINTER**

Different widths and colors.



**DINING TABLE**

Different widths and colors.



**BED COVER**

Different widths and colors.



**LAPTOP**

Different widths and colors.





**MODERN CHAIR**



**BEIGE SOFA**



**LAMPS**



**LEATHER CHAIR**



**CREATIVE LIGHTS**



**CERAMIC VASE**



**VASE PACK**



**BLANKET**

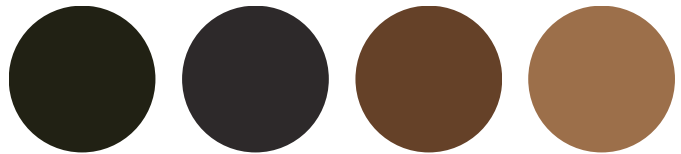


**COFFEE TABLE**

# DINING ROOM



# OFFICE CHAIR





## LIGHTING



### BLACK BALL

A minimalist lamp, featuring a sleek design with adjustable brightness.



### MINIMALISM

A smart lamp with voice-activated controls and energy-saving features.



### LIGHT CLOUD

A desk lamp with a flexible neck, allowing for precise lighting direction.



### ELEGANCE

A lamp with a built-in wireless charging pad for smartphones and other devices.



### BRIGHT DAY

A decorative lamp with a stained-glass shade, adding a touch of elegance.



### LUXURY STAR

A vintage table lamp with a rustic finish and a classic style.



### JUST WOODEN

A modern lamp with a geometric shape and touch-sensitive controls.



### MINIMALIST BLACK

A floor lamp that emits a soft, ambient glow, perfect for cozy reading corners.

# HOME INTERIOR SOLUTION



# INTERIOR

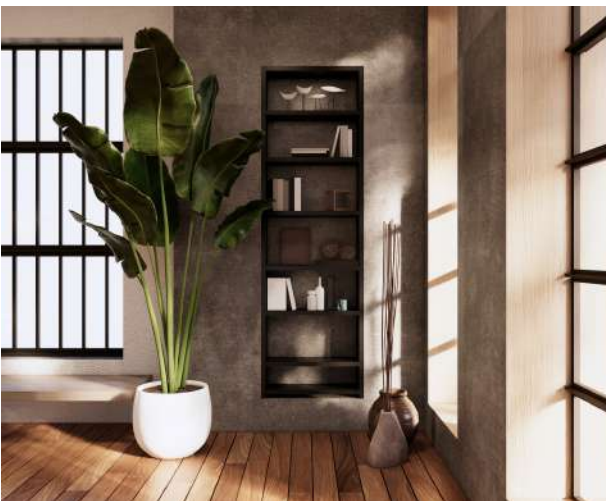




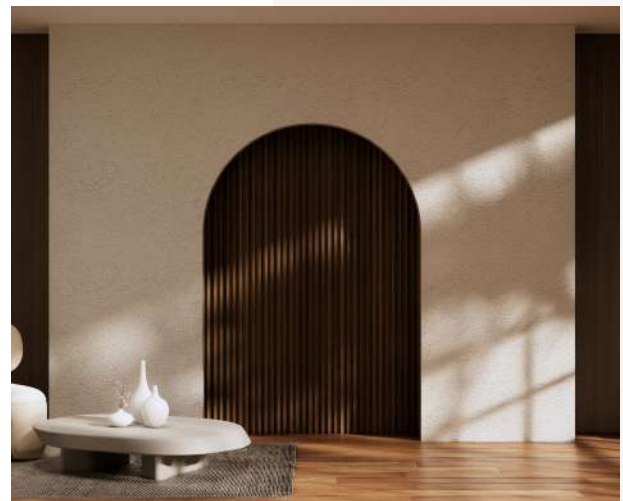
**Bed Room Interior**



**Bath Room Interior**

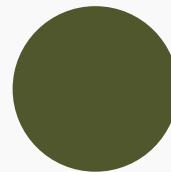
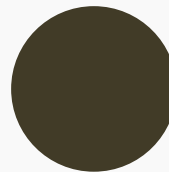


**Study Room Interior**



**Drawing Room Interior**

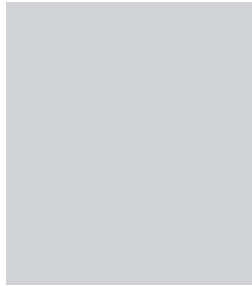
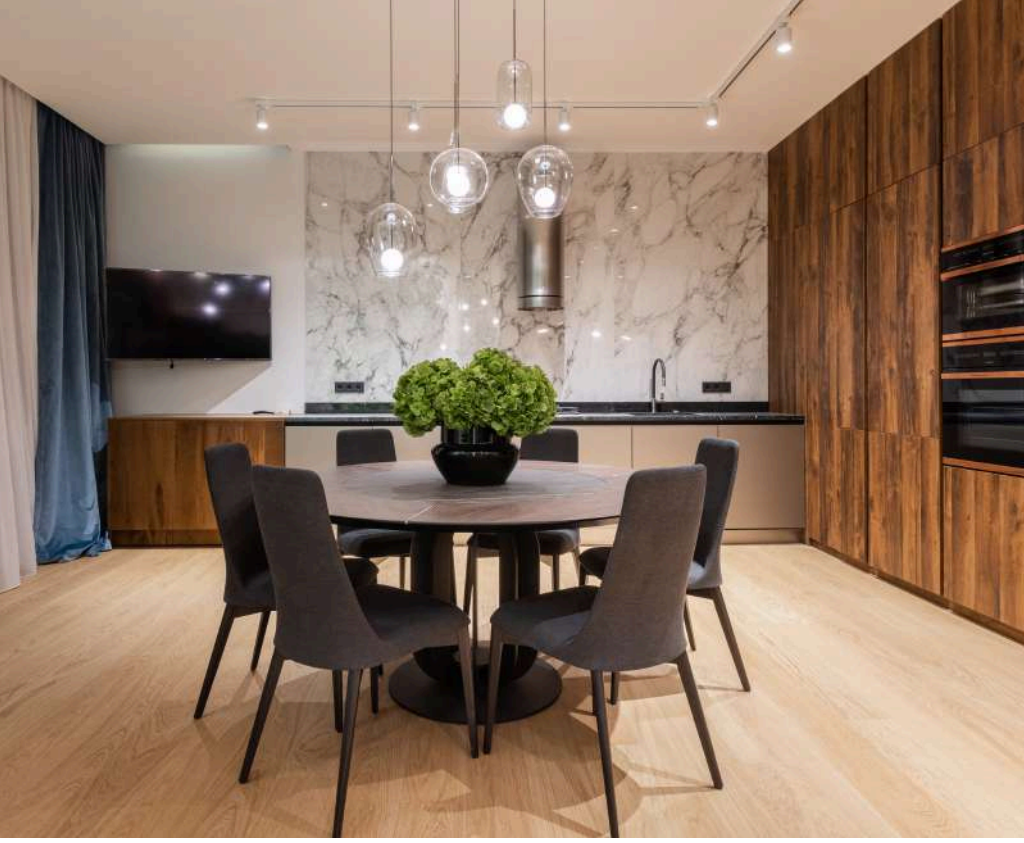
# KITCHEN INTERIOR SOLUTION



## MODULAR KITCHEN INTERIOR

**A rustic,  
stylish  
interior  
design**







**SUBAI ENGINEERING SOLUTION AND SERVICES**

# *Interior Design*



# OUR PARTNERS

**acer**

 **LG**

**hp**

**Carrier**

**brother**

 **BLUE STAR**

**Crompton**

 **KONICA MINOLTA**

 **KOENA  
ENGINEERING**

**Godrej**

 **HAVELLS**

**VOLTAS**  
**VOLTAS · beko**

**Jaquar**

**Prestige**

**Greenply**  
Industries Limited

 **Nilkamal**  
India's Favourite Furniture



# SUBAI ENGINEERING

**SOLUTION AND SERVICES**



Address:

**Ghatakula, Netaji Nagar,  
Madhupatna, Po/Ps-  
Madhupatna, Town/Dist-  
Cuttack-753010**



**9337141617 /9861075198,**



**SUBAI.ENG.SOLUTION@GMAIL.COM**

Visit Our Website



**[www.subaiengineeringsolutionandservices.com](http://www.subaiengineeringsolutionandservices.com)**